



**Océ**  
ColorWave 300  
multifunction  
system

Jump to one



**Canon**  
CANON GROUP

All-in-one large  
format color system

## Jump to one

- One for all: print, copy, and scan in color and black and white
- One that saves: reduce floor space and labor
- One for tomorrow: grow your business sustainably

# Jump to one



## Océ ColorWave 300 multifunction system

Wide format color, all in one



Don't waste a bit of valuable space. Jump over to the one system that can do it all. The Océ ColorWave<sup>®</sup> 300 multifunction system effortlessly handles all your color and black and white print, scan, and copy jobs. And the optional top delivery tray saves even more space by neatly collating and stacking your documents.

Designed around your needs and our long understanding of the wide format industry, the Océ ColorWave 300 multifunction system delivers the quality and flexibility of a color printer with the ease of use and workflow efficiency of a monochrome system. It's the first truly integrated all-in-one color multifunction system for large format users.

# Océ ColorWave 300 multifunction system

## One system for all of your tasks: print, copy, and scan in color and black and white

Print, copy, and scan all your color and black and white wide format documents on one system. Thanks to the top mounted scanner, all functions can be controlled from one simple user panel. Unique Océ technologies, like Océ Image Logic® technology ensures first-time right results, while Océ Dynamic Switching technology maximizes productivity of mixed drawings—all without complex print settings or user configuration. Whether you are printing complex GIS or BIM drawings or copying detailed black and white CAD documents, the Océ ColorWave 300 multifunction system is up for the job.

The powerful controller swiftly handles the most widely used file formats — HP-GL/2, PDF, DWF, JPEG and many more —

and large files in concurrent operation without sacrificing speed. Files can be submitted via state-of-the-art drivers and job submission tools.

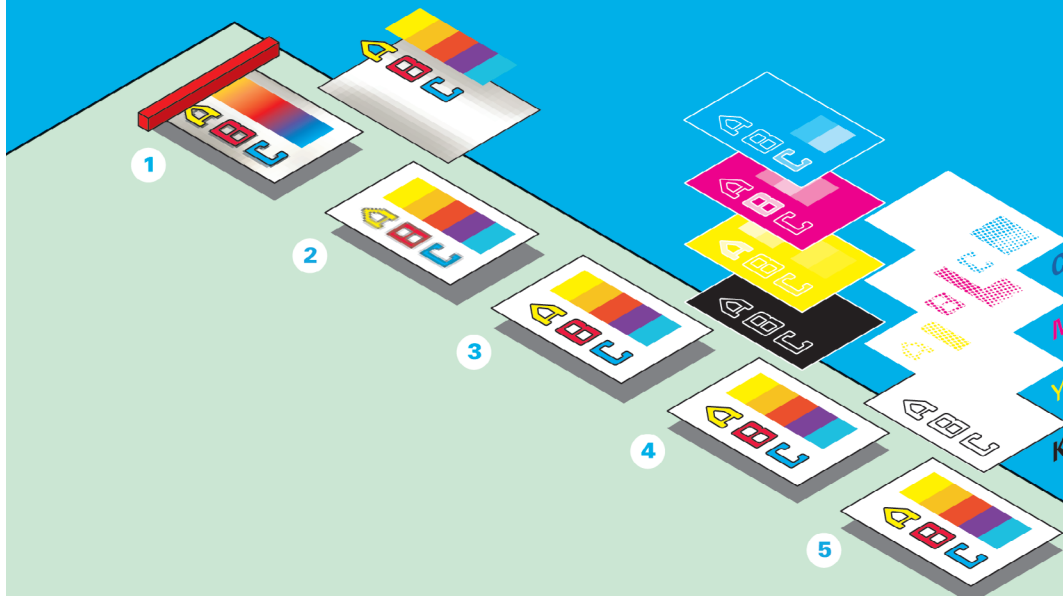
Realize further flexibility by printing from and scanning to a USB flash drive. The optional Océ Repro Desk® Studio software lets you preview prints to avoid misprints and effortlessly track your print volumes and costs.

The Océ ColorWave 300 multifunction system is a true all-in-one:

- One system for all your technical applications
- One system that can be easily operated by all users
- One system footprint for stacking all your documents
- One system that can handle your large format document needs today and tomorrow

## Achieve superior scan and copy quality with Océ Color Image Logic technology

- 1 **Scanning:** scanner efficiently captures the original image
- 2 **Background correction:** removes unwanted wrinkles and background without affecting critical light colored information
- 3 **Filtering:** sharpens lines and text
- 4 **Color management:** matches colors of original to printer ensuring optimal copy quality
- 5 **Halftoning:** converts image to printable data



# All-in-one large format color system



**1 Efficient scroll and click user panel**  
Simply scroll and click to select with smart buttons and color visuals to clearly guide you through copy, scan, and print jobs.

**2 Time saving templates**  
Templates enable recurring tasks to be performed at the touch of a single button. Format resolution, color or B&W, file format, destination, etc. Just press a button and start.

**3 Convenient USB printing and scanning**  
Easily print and scan documents, on the spot, with a USB flash drive so you don't have to haul stacks of plans around. Ideal for frequently revised documents.

**4 Neat document stacking**  
Active curl guide and air separation keeps different sizes and types of media neatly collated and stacked on optional top delivery tray. No extra space table required.

**5 Superior color and black and white scanning with Océ Color Image Logic technology**  
Océ Color Image Logic technology automatically compensates for wrinkles and background to produce superior results without affecting information in light colors.

**6 High print quality and productivity ensured with Océ Dynamic Switching technology**  
Automatically determines the best print setting for each part of the plot. Delivers high print quality without sacrificing productivity.

**7 Uninterrupted operation**  
Print, copy, and scan at the same time. Add ink and paper while system is running. Easily load new media. Paper is fed, cut, and sized — automatically.

**8 Efficient workflow**  
Océ Express WebTools provides a web-based job submitter so users can print from any desktop without installing additional software. Track costs with optional Océ Repro Desk Studio software.

## One system that saves: reduce floor space and costs

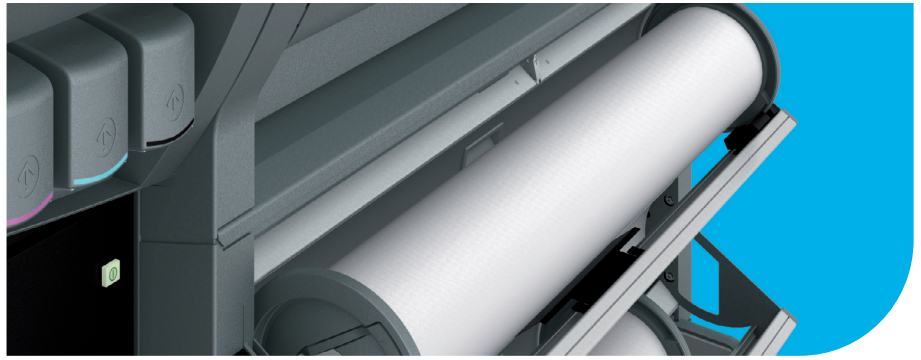
Reduce floor space requirements by replacing multiple printers and scanners with a single system that can handle both color and monochrome output. The top delivery tray eliminates the need for an extra stacking table, allowing neatly collated copies/prints to be easily picked up from the front. Media and ink are loaded from the front for further convenience.

Reduce cost by investing in one system to do both color and monochrome tasks. Consolidating multiple devices to one system simplifies supply requirements and IT support resources. And the design and technology of the Océ ColorWave 300 multifunction system lowers energy consumption compared to conventional monochrome systems.

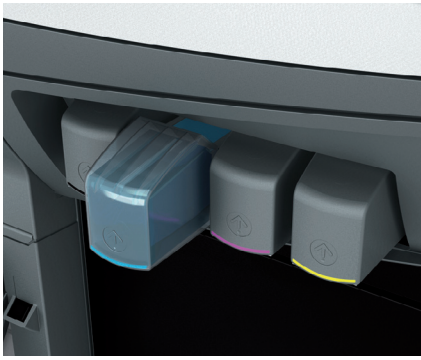
## One system to grow with your needs: grow your business sustainably

Boost your competitive edge by applying monochrome or color as needed to enhance documents and make your company stand out. The Océ ColorWave 300 multifunction system easily accommodates monochrome jobs without compromising on throughput for color applications.

The Océ ColorWave 300 multifunction system helps achieve a more sustainable working environment. Waste is eliminated by using automatic original and media size recognition and image positioning features to avoid misprints. And your working environment is not affected by ozone, dust, or odors.



General	
Description	Wide format color, all-in-one (single footprint print, copy and scan system)
Technology	Thermal inkjet with Océ Dynamic Switching technology
Number of inks/printheads	3 black printheads (K) and 2 printheads each color (C, M, Y)
Speed	Black and white: 41 seconds/E-size; Color: 63 seconds/E-size
Warm-up time	Instant on
Configurations	Océ ColorWave 300 R multifunction system (includes receiving tray) Océ ColorWave 300 T multifunction system (includes top delivery tray and receiving tray)*
Roll options	2 rolls (standard)
Output delivery	Front-accessible receiving tray Optional top delivery tray with active curl guide, stacks up to 50 sheets depending on media type and size*
Certifications	ENERGY STAR®, TuV GS, CETECOM, CE, UL, cUL, RoHS, CB, FCC, RoHS, FEMP
Printer	
Print resolution	True: 600 × 600 dpi
Paper capacity	Up to 395' per roll, standard 2 rolls
Output sizes width	11"-36"
Output sizes length	8.5"-147'6" (might influence side margins when > 16')
Paper weight	16 lb.-50 lb.
Media type	Uncoated papers, recycled papers, coated papers, transparent papers, photo papers and films
(www.oceusa.com/imagingsupplies)	
Controller	
Controller type	Embedded Océ PowerM® controller with Windows XP® Embedded
Memory	1 GB
Hard drive	160 GB
Page Description Language	HP-GL, HP-GL/2, TIFF, JPEG, DWF, Adobe® PS®/PDF (option) CALS, NIFF, NIRS, ASCII, CalComp 906/907/951, C4
Scanner	
Scanner type	Contact Image Sensor (CIS) with Océ Color Image Logic® technology
Scan resolution	Optical resolution 600 × 600 dpi
Scan speed	Up to 38'/min. (monochrome), up to 13'/min. (color)
Scan format	TIFF, PDF (PDF/A), JPEG, Multipage TIFF & PDF/A, CALS
Scan destination	Local USB flash drive, controller, network via FTP or SMB
Original size width/length	8.2"-36"/8.2"-52'6"
Original thickness	Up to .031" (non rigid media)
Scaling	Scale to standard format and custom scale 10 %-1000 %
Preset modes	Color: Artwork, line/text, map, photo Grayscale/B&W: Line/text, colored original, photo, blueprint, dark original
Print, copy, and scan workflow	
General workflow	Concurrent print, copy, scan and file processing
Submission	Single files: local USB flash drive, Microsoft® Windows® driver, Adobe Postscript 3™ driver Sets of files: Océ Express Web Tools Publisher Express (integrated web-based job submission); Océ Client Tools Publisher (set submission with powerful document transformation and WYSISYP preview)
Job management	Océ Express WebTools: Single interface to view and control the system via an Internet browser without the need to install additional software; Monitor and manage the system status, settings, network configurations, updates; Includes personal Smart Inbox for organizing print jobs Océ Repro Desk Studio software*: for printing to multiple wide format devices, viewing, and cost tracking Océ Account Center: featuring customized accounting fields and copy/print/scan lock out
Accounting	Océ Repro Desk Studio software* (option): for registering print, copy, and scan activities
Templates	Four each user-defined copy and scan templates. Enables recurring tasks to be performed at the touch of a single button



Options	
Hardware	Océ Scanner Express (integrated on top of the printer for copying and scanning) Top delivery tray with active curl guide: for stacking of different media types and sizes*
Software	Adobe PostScript 3/PDF file interpreter. Enables the submission of PDF files with USB flash drive or job submission tools directly to the printer Océ Repro Desk Studio software: for printing to multiple wide format devices, viewing and cost tracking Océ Account Center: featuring customized accounting fields and copy/print/scan lock out
Network information	
Client OS support	Windows driver for Windows Vista® (32 & 64bits), Windows XP and Windows Server® 2003 Windows Terminal Server, Citrix® Metaframe and presentation server Adobe PostScript3 driver for Windows XP and Windows Server 2003, Mac OS® v9, Mac OS X Océ Express WebTools for Windows® Internet Explorer® and Mozilla® Firefox®
Standard interface	Ethernet 100 MB/sec., 1GB/sec.
Network protocols	TCP/IP, IPv6, IPX/SPX, Windows APIPA
Printing protocols	LPR, Novell®NDPS, FTP
Scanning protocols	FTP, SMB
Environmental data	
Power consumption active mode (printing)	Engine (printer + scanner): 201 W, controller: 38 W
Power consumption ready mode (standby)	Engine (printer + scanner): 146 W, controller: 38 W
Power consumption sleep mode	Engine (printer + scanner): 3 W, controller: 38 W, ENERGY STAR
Power requirements (V/Hz/A)	100 V - 240 V, 50/60 Hz, 9 - 4 A
Energy consumption per print	34 Wh calculated average based on an E-size print and EPA ENERGY STAR® TEC method
Noise Level (active/ready)	66 dB (A)/47 dB (A)
Ozone concentrations	None
Recyclability hardware	Designed to be upcycled or recycled. Engine made of steel and recyclable plastics
Recyclability inktanks	Made of recyclable plastics polyethylene and polypropylene
Size print engine (w x d x h)	78" x 31" x 50" (including scanner, receiving tray and user panel) 78" x 36" x 68" (including scanner, top delivery tray, receiving tray and user panel)
Size scanner (w x d x h)	43" x 12" x 5.5" (fits on top of print engine)
Weight print engine	400 lb.
Weight scanner	54 lb.
Weight top delivery tray*	82 lb.
Supplies	
Consumable type	Océ high density aqueous ink (black: pigment, color: dye)
Size	Ink tank size: Black ink tank size: 200 ml, 400 ml Color ink tanks size: 180 ml, 350 ml
* available soon	

# Beyond the Ordinary

## Environmental Certifications



### Mixed Sources

Product group from well-managed forests and other controlled sources  
www.fsc.org Cert no. SCS-COC-00856  
© 1996 Forest Stewardship Council



## Awards



communication design award

2006



product design award

2006



product design award

2007 gold



product design award

2008



## Partners Certifications



Novell



## Printing for Professionals

### Creating global leadership in printing

Canon and Océ join forces to create the global leader in the printing industry. For our customers this combines Canon and Océ technology with the support of the Océ direct sales and service organizations. Look to the new Canon-Océ combination for:

- Enterprise printing in the office and corporate printroom
- Large format printing of technical documentation, signage and display graphics
- Production printing for marketing service bureaus and graphic arts
- Business Services for document process outsourcing

Certified Partner



Printing for Professionals

### Custom Blueprint & Supply, Inc.

1632 South Broadway

St. Louis, MO 63104

314-231-4400

Fax-231-0426

[www.customblueprint-supply.com](http://www.customblueprint-supply.com)

[custblue@customblueprint-supply.com](mailto:custblue@customblueprint-supply.com)