

Canon

**imagePROGRAF
iPF MFP M40**

Custom

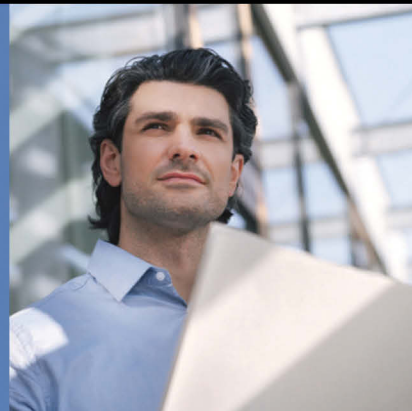
Blueprint & Supply Inc.
1632 S. Broadway, St. Louis, Mo 63104
314-231-4400 / fax-231-0426
www.customblueprint-supply.com

imagePROGRAF



**TECHNICAL
DOCUMENTS**

MFP LARGE-FORMAT IMAGING





Introducing the imagePROGRAF iPF MFP M40 System

Large-format scan-to-copy/
file/share solutions



The Canon imagePROGRAF iPF MFP M40 systems are multicomponent, multifunction solutions for architects, engineers, construction, GIS, and other professionals who need to scan, edit, save, share, and print large-format documents easily and efficiently.

FEATURES

- **M40 Scanner** with SingleSensor assembly technology* delivers incredibly fast and accurate scan speeds.
- **SmartWorks MFP** scan to copy/file/share software includes new custom presets, image enhancements, and all new cloud integration.
- **Direct Print & Share is** Canon's Cloud Portal software for file sharing.
- **A customizable system**—choose between 36" or 44" printers for maximum versatility.
- **Computer, Touch-Screen Monitor, and Stand** are all included in the system.

* SingleSensor assembly technology means that multiple sensors are contained in one assembly device.



Simplify your workflow with the 36" imagePROGRAF iPF785/iPF780 and 24" iPF685/iPF680 Large-Format Printers

The newest additions to Canon's technical document large-format printer line-up.

These printers aim to boost productivity while staying true to some of their great legacy features. Faster draft printing, increased ink tank sizes, a new magenta ink, and software enhancements help make printing easier and more convenient than ever before, while the sub-ink-tank system, large on-board hard drive,* and user-friendly assembly all carry over to help ensure the printer operates seamlessly into your workflow.

NEW FEATURES

HIGH PRODUCTIVITY

- **Print speeds** are capable of producing a 24" x 36" Arch D-sized print in approximately **21 seconds** in Economy Mode![▲]

LARGE-CAPACITY INK TANKS

- In addition to the 130 ml ink tanks, 300 ml ink tanks are compatible with these solutions to **help lower ink costs** per print. Users also have the option to mix and match ink tank sizes.

NEW MAGENTA INK

- A newly formulated Magenta ink helps improve the **clarity and vibrancy** of red fine lines, text, and images.

SUB-INK-TANK SYSTEM

- Allows for **ink tanks to be changed on the fly**, without interrupting the print job.

SOFTWARE

- **Canon workflow solutions** feature familiar and new favorites, such as a new mobile printing app,^{▲▲} Direct Print & Share, Status Monitor, Media Configuration Tool, Print Plug-in for Microsoft® Office, and more!

[▲] iPF785/780 models only.

^{▲▲} App can be downloaded from iTunes®.

*Hard drive included only with iPF785 and iPF685 models.

imagePROGRAF iPF MFP M40 SYSTEM

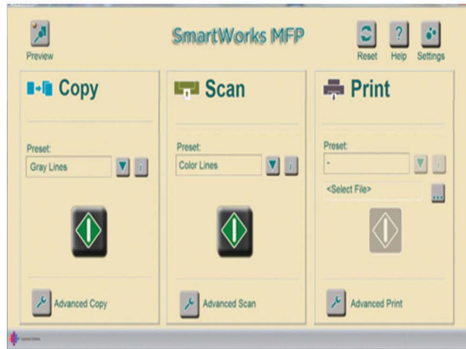
M40 SCANNER



The M40 scanner with SingleSensor assembly technology brings the MFP solution to a whole new level. You have the ability to scan documents at incredible speeds and, with the included USB 3 connection, experience data transfer speeds of up to 10 times faster than on previous MFP models! The intuitive control panel embedded on the scanner helps make operation of the device incredibly easy, and its compact design helps space become a non-issue when using and storing the device.

- Optical resolution of 1200 dpi
- Scan speeds of 13 inches per second monochrome and 3 inches per second color
- Capability to accept media of different thickness (up to 2mm)

SMARTWORKS



The included SmartWorks MFP scan-to-copy/file/share software has been enhanced and now helps you to be more efficient than ever before.

- New user interface for easy navigation
- Ability to add custom presets with one-touch retrieval for those often-used settings
- New image enhancements for white point adjust, black point adjust, sharpen, mirror, and invert
- Full integration with Direct Print & Share Cloud Portal software

SYSTEM

Experience the vast customization options that come with your MFP system. The Canon imagePROGRAF iPF MFP M40 large-format imaging system is designed to be a complete scan-to-copy, file, and share solution. The system includes an imagePROGRAF iPF large-format printer, M40 large-format scanner, MFP stand, computer, SmartWorks MFP software, and a large touch-screen monitor. This solution provides a fast and effective system for printing, copying, archiving, and distributing maps, drawings, renderings, site and facilities management plans, design and layout proofs, posters, and more.

With the iPF765 or iPF760 printer, the integrated stand allows the user to position the monitor in a variety of configurations to provide optimal functionality and comfort, as well as allowing the user to mount the stand onto the printer for a true all-in-one structure, or keep them separate for easy maneuverability. The MFP solution includes a touch-screen monitor, and users now have the option of selecting to have their scanned documents come straight out the back of the scanner, or rewind to the front for easy retrieval. Customization is truly brought to a whole new level with the iPF MFP M40 system.

- Fully operational PC for vast customization and creativity
- Integrated stand for structural customization (iPF765 and iPF760 printers only)

MARKETS

The iPF MFP M40 system is designed to help bring a fully operational work solution to you out in the field and provide you with all the tools to help enhance your technical document productivity. Whether you have a low-volume architecture firm or a high production enterprise environment, you can choose the right printing solution to meet your workflow requirements. See how the MFP solution can bring your business to the next level. This solution's capability to help you produce high image quality at impressive speeds—and achieve remarkable productivity—help make it a welcome addition for anyone looking to advance in the AEC, GIS, and other technical industries.

M40 Large-Format Scanner

- SingleSensor assembly technology
- Scans images up to 40" wide

SmartWorks MFP Software

Featuring one-touch "green button"
Copy, Scan, and Print functions

Touch-Screen Monitor



Large-Format Ink-Jet Printer

Five models to choose from

**On-Board PC Software
and Workflow Solutions**

- Direct Print and Share
Cloud Portal Solution
- PosterArtist Lite
- Canon Printer Driver
- Print Plug-in for
Microsoft Office
- Accounting Manager
Feature

MFP Stand



DIRECT PRINT & SHARE SOFTWARE

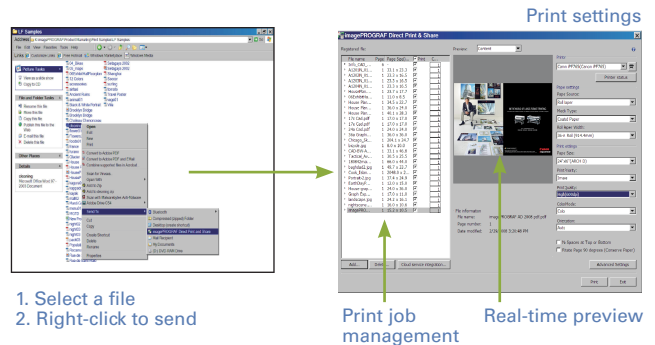
Canon's Direct Print & Share* is a cloud-based portal service that allows users to expand their workflow. Through a Google** account, users are given the ability to scan and upload documents to their own cloud storage space and have those documents printed from almost anywhere!

Easily print PDFs, TIFFs, and JPEGs through the user-friendly interface, and even have the ability to do batch printing. To help further integrate with your Canon printer and software, Direct Print & Share comes with a print plug-in for SmartWorks MFP V3 (also included) and AutoCAD® (sold separately) to make cloud use through this software incredibly easy. Scan, upload, download, and print directly from these software solutions to help streamline your workflow.

FEATURES

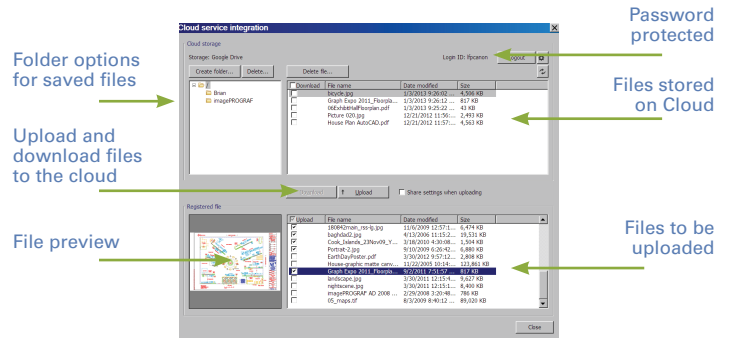
- Accessible from almost anywhere in the world
- 5GB of free storage
- Batch printing of multiple files
- Integration with software solutions, such as SmartWorks MFP V3 and AutoCAD
- Drag-and-drop TIFF, JPEG, and PDF files to shortcut icon

iPF Direct Print & Share



Cloud Service Integration

Cloud Storage



*Direct Print & Share comes embedded with the imagePROGRAF iPF MFP M40 System, and is also available as a free download at <http://usa.canon.com/downloads>.

**You must open a Google Cloud account to take advantage of the cloud functionality. Storage capacity and any pricing thereof is based on Google's current offering and is at Google's discretion. Your Google Cloud account is subject to Google's terms and conditions, which is subject to change at Google's discretion. Neither Canon Inc., nor Canon U.S.A., Inc. represents or warrants any third-party product, service or feature referenced hereunder.

imagePROGRAF

SPECIFICATIONS



Print-Head
PF-04

Technology
FINE (Full-Photolithography Inkjet Nozzle Engineering)

Print Resolution (Max.)
2400 x 1200 dpi

Line Accuracy*
±0.1% or Less

Minimum Line Weight**
0.02 mm

Number of Nozzles
Matte Black: 5,120 Nozzles
Other Colors: 2,560 Nozzles per Color

Droplet Size
4 Picoliter

Nozzle Pitch (Head Resolution)
1200 dpi x Two Rows

Print-Head Swath
1.07 inch

Ink Type

Dye
Cyan (C), Magenta (M), Yellow (Y), Black (K)

Pigment
Matte Black (MBK)

Ink Tank
PFI-107: C, M, Y, BK, MBK
PFI-207: C, M, Y, BK, MBK

Ink Tank Capacity
Starter: 130 ml (MBK), 90 ml (All other colors)
Replacement: 130 ml or 300 ml

Ink Supply Method
Tubing System with Sub-Ink-Tanks for Continuous Ink Supply

Nozzle Recovery System
Non-firing Nozzle Detection and Compensation

Printer Controller
L-COA Processor

Printer Memory
256 MB

Hard Drive (iPF785/iPF685 only)
320 GB
32 GB Dedicated File Processing Memory

Mail Boxes (User Job Storage) (iPF785/iPF685 only)
1 Common Inbox, 29 User Inboxes (Password-protected)

Media Feed

Roll Feed
One Roll, Top-loading, Front Output

Cut Sheet
One Sheet, Top-loading, Front Output

Media Width

Roll Feed
iPF785/iPF780: 10" – 36" (254 mm – 914 mm)
iPF685/iPF680: 10" – 24" (254 mm – 610 mm)

Cut Sheet
iPF785/iPF780: 8" – 36" (203.2 mm – 914 mm)
iPF685/iPF680: 8" – 24" (203.2 mm – 610 mm)

Printable Margins

Roll Feed
All Sides: 0.12" (3 mm) or 0" for Borderless

Cut Sheet
Leading, Sides (Left and Right): 0.12" (3 mm)
Trailing: 0.91" (23 mm)

Maximum Print Length (Single Page)***

Roll Feed
59' (18 m)

Cut Sheet
63" (1.6 m)

Borderless Printing Widths (Roll Media Only)
10", B4, A3, 14", A2, 17", B2, A1, 24"
iPF785/iPF780 only: B1, A0, 36"

Media Cutter
Durable Dual-blade Rotary Cutter

Media Thickness
0.07 – 0.8 mm (2.8 – 31.4 mil)

Media Core Sizes
2" and 3" Core (Adapter Included)

Maximum Roll Outer Diameter
5.9" (150 mm)

Output Media Bin
Flat Stacker/Basket

Output Media Bin Capacity
20 Sheets (With Stackable Configuration)

Printing Software
imagePROGRAF Printer Driver for Windows®/Mac, Printer Driver Extra Kit for Windows/Mac (Free Layout, Color imageRUNNER® Enlargement Copy, Advanced Preview), Print Plug-in for Microsoft Office (PC only), Optimized Module for AutoCAD® for Windows, Direct Print & Share (PC Only), Status Monitor for Windows, PrintMonitor for Mac, Media Configuration Tool, PosterArtist Lite for Windows

Operating System†
Windows XP (32 bit), Server 2003 (32/64 bit), Server 2008 (32/64 bit), Server 2012 (64 bit), Windows Vista® (32/64 bit), Windows 7 (32/64 bit), Windows 8 (32/64 bit), Macintosh OS X 10.6.8 - 10.9.X

Print Language
GARO (Canon Proprietary), HP-GL/2, HP RTL

Interface
USB 2.0 Hi-Speed, 10/100/1000Base-T/TX

Protocol
TCP/IP (IPv4/IPv6), IPX/SPX, AppleTalk®, SNMP (Canon MIB supported), HTTP

Acoustic Noise

Operation
iPF785/iPF780: Approx. 48 dB
iPF685/iPF680: Approx. 47 dB

Standby
35dB or Less

Acoustic Power
iPF785/iPF780: Approx. 6.5 Bels
iPF685/iPF680: Approx. 6.4 Bels

Power Supply
AC 100–240 V (50–60 Hz)

Power Consumption

Maximum
140 W or Less

Standby
5 W or Less

Power Off
1 W or Less (Executive Order Compliant)

Certifications

Electrical Safety Regulations
TUV (USA), cTUV (USA), TUV.S mark, CB certification (Others)

Electromagnetic Interface Regulations
FCC Class B (USA), IC Class B (Canada)

Environmental Certifications
ENERGY STAR® (Worldwide), RoHS Directive

Operational Environment

Temperature
59 – 86 F° (15 – 30 C°)

Relative Humidity
10 – 80% (No Condensation)

Printer Dimensions (H x W x D) and Weight with Stand and Basket
iPF785/iPF780: 42" x 51" x 35" (1066.8 mm x 1422.4 mm x 889 mm) with Basket Open
42" x 51" x 43" (1066.8 mm x 1422.4 mm x 1092.2 mm) with Basket Extended for Flatbed Stacking
Approx. 150 lb. (68 kg)

iPF685/iPF680: 42" x 39" x 35" (1066.8 mm x 990.6 mm x 889 mm) with Basket Open
42" x 39" x 43" (1066.8 mm x 990.6 mm x 1092.2 mm) with Basket Extended for Flatbed Stacking
Approx. 125 lb. (56 kg)

Package Dimensions (H x W x D) and Weight
iPF785/iPF780: 31" x 56" x 46" (787.4 mm x 1422.4 mm x 1117.6 mm)
Approx. 249 lb. (112 kg)

iPF685/iPF680: 45" x 44" x 35" (1143 mm x 1117.6 mm x 889 mm)
Approx. 205 lb. (92 kg)

Options
PosterArtist
iPF785/iPF780: Roll Holder Set (RH2-33)
iPF685/iPF680: Roll Holder Set (RH2-26)

User-Replaceable Items
Ink Tank (PFI-107 MBK, BK, C, M, Y) (PFI-207 MBK, BK, C, M, Y)
Print-Head (PF-04)
Maintenance Cartridge (MC-10)

* Line accuracy repeatability is guaranteed after a user performs necessary adjustment and under the same environmental conditions. Applies to media for line drawing (Plain Paper, Coated Paper, CAD Translucent Matte Film, and CAD Tracing Paper) only.

** Theoretical value based on data resolution.

*** The maximum printable length varies, depending on the application, OS, and RIP used.

† For imagePROGRAF Printer Driver. For printing from PostScript applications such as Adobe Illustrator or QuarkXPress, please use a PostScript compatible RIP package. For a list of Canon recommended RIP packages, please consult with Canon Alliance and Industry Market program list of RIP vendors at www.usa.canon.com.

Custom Blueprint & Supply, Inc.

1632 South Broadway
St. Louis, Mo. 63104
314-231-4400
Fax-231-0426
custblue@customblueprint-supply.com

www.customblueprint-supply.com

As an ENERGY STAR® Partner, Canon U.S.A., Inc. has qualified these models as meeting the ENERGY STAR energy efficiency criteria through an EPA recognized certification body. ENERGY STAR and the ENERGY STAR mark are registered U.S. marks. Canon, imagePROGRAF, imageRUNNER, and the GENUINE logo are registered trademarks of Canon Inc. in the United States and may also be registered trademarks or trademarks in other countries. Apple, iTunes, and iPad are registered trademarks of Apple Inc. All other referenced product names and marks are trademarks of their respective owners. All printer output images are simulated. Specifications and availability subject to change without notice. Not responsible for typographical errors.

©2014 Canon U.S.A., Inc. All rights reserved.

0187W175
0714-iPF78X/68X-10M-LTM



imagePROGRAF



M40 SCANNER SPECIFICATIONS

Scan Speed*

- 48-bit Full Color @ 200 dpi: 3" (per second)
- 8-bit Grayscale and Monochrome @ 200 dpi: 13" (per second)

Scan Modes

- 16.7-million Color RGB (24-bit)
- 256 color RGB Adaptive Indexed Color Palette (8-bit)
- 256-level Grayscale (8-bit)
- Black and White (1-bit)

Color Space

Normalized RGB

Resolution

- 9600 dpi (maximum interpolated)
- 1200 dpi (optical)

Scan Accuracy**

+/- 0.1% ; +/- 1 pixel

Maximum Image Width

40"

Maximum Media Width

42"

Maximum Scan Length

96"

Maximum Media Thickness

0.079" (2mm)

Media Feed System

Single large diameter precision ground drive roller; adaptive CIS media focus management and media guide mechanism; intuitive face-up, front-loading, and front/rear-exit media path with side justification; automatic media size detection with reliable optical media sensors

Digital Imaging Technology

Contact Image Sensor (CIS) Technology (SingleSensor Assembly)

- 5x close-spaced "deep focus" CIS (25,000 pixels)
- 48-bit RGB digital color image capture (50,400 pixels)
- 16-bit grayscale image capture
- Panchromatic monochrome and black and white
- Bi-directional extra long-life LED light system for optimum object illumination and instant-on scanning capability

Digital Image Processing

- 2D Intelligent Adaptive Thresholding (IAT) (1-bit mode)
- Fixed Threshold Black and White (1-bit mode)
- Dynamic Normalization Application (DNA) with 16-bit Super Sampling

User Status and One-Touch Operation

Center mounted LCD scanner control panel; walk-up operation and user selection of scanner mode with stop, forward, rewind, scan, and copy buttons; local language options, panel overlay, and Magnetic Media Guide

Included Software

- SmartWorks MFP Scan-to-file, Copy, E-mail with Real-time Image Viewer. Supports TIFF, JPEG, TIFF G4, and PDF.
- Direct Print & Share Cloud Portal Solution

Operating System

Windows 7 Professional (64-bit)

User Maintenance

Installable Plug-and-Play Scanner; Simple Cleaning

Scanner Interface Kit

Superspeed USB 3.0 (PC Connector Compatible with USB 2.0 and USB 3.0 sockets)

Operating Environments

10 – 35°C, 35-80% RH, Non-condensing

External Power Supply

100-250 VAC Autosensing +/- 10%, 50-60Hz

Scanner Power Consumption

- 53Wh (scanning)
- 5Wh (stand-by)

Compliances

VCCL, CB, CE, FCC, UL, RoHS, ENERGY STAR®

Stand and Scanner Dimensions

Height: Swing Arm: 57.5"
Straight Arm (max): 66"
Width: Swing Arm (max): 69.9"
Straight Arm: 53.6"
Depth: 31.5"

Stand and Scanner Weight

Approx. 120.4 lb.

What's In The Box?

- M40 Scanner with Power Cord and USB 3.0 and USB 2.0 Cables (scanner to server)
- 2 Meter USB Cable (server to printer)
- M40 MFP Stand
- M40 MFP Stand Assembly Instructions
- SmartWorks MFP Software
- Computer
- Flat Panel Touch-screen Display
- Installation and Operation Manual
- Operator Manual on CD-ROM
- Document Return Guide
- Magnetic Paper Guide

* The scan rate is proportional across the full range of resolutions supported by the scanner. Actual scan times will depend on the host system performance. Quoted top speeds may be limited by the effective bandwidth of the USB 2 and is not guaranteed for all media types.

** The quoted scan accuracy may vary depending on the operating environment and the thickness of the media.

Canon
image*ANYWARE*

Custom Blueprint & Supply, Inc.

1632 South Broadway
St. Louis, Mo. 63104
314-231-4400
Fax-231-0426
custblue@customblueprint-supply.com

www.customblueprint-supply.com

The imagePROGRAF iPF MFP M40 systems contain multiple components, some of which are manufactured by third parties. To the extent that such third party offerings come with limited warranties, such limited warranties are hereby passed to the purchaser, and Canon shall have no obligation or any liability with respect to such third party offerings.

As an ENERGY STAR® Partner, Canon U.S.A., Inc. has determined that this product meets the ENERGY STAR guidelines for energy efficiency. ENERGY STAR and the ENERGY STAR mark are registered U.S. marks. CANON, IMAGEPROGRAF, and the GENUINE logo are registered trademarks of Canon Inc. in the United States and may also be registered trademarks or trademarks in other countries. IMAGEANYWARE is a trademark of Canon. All other referenced product names and marks are trademarks of their respective owners and are hereby acknowledged. Some items may not be available at this time; please check for availability. Specifications and availability subject to change without notice. All printer output images and effects are simulated. MFP shown with iPF825 and iPF765 printer. ©2013 Canon U.S.A., Inc. All rights reserved.

0175W110
0313-iPFM40-5M-LCR

